

RE-IMAGINE URBAN LIFE

DSL
Essencia

URBAN FARMS



DSL Essencia

Life On Your Own Terms

In a city that is growing rapidly and home to more than one crore people, finding a home that stands for exclusivity, peace and luxury living has become rare. Many ready-made houses are available in the market, yet they cater to only some of our needs, making us compromise on others.

But buying a piece of land in a favourable location, building a home according to our desires and living uncompromisingly is the ultimate.

Welcome to DSL Essencia, the obvious way to live!

Embrace a serene, exclusive life with your home at DSL Essencia. The spacious and well-designed plots, with an ambience of tranquility and surrounded by amazing views, are perfect for your weekend home or farm house.



DSL
Essencia
URBAN FARMS

Life of Utmost Exclusivity

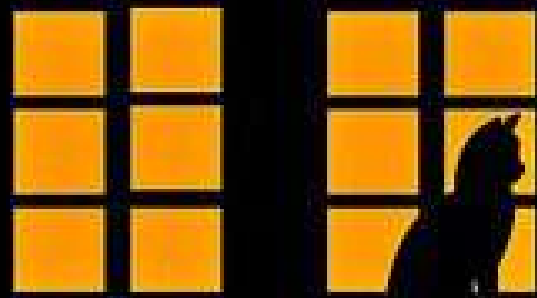
Experience a place where your address becomes a true reflection of your aspirations. Essencia offers well-planned and well-maintained plots with a host of amenities that make life comfortable and convenient. The project has a clubhouse that features a swimming pool, gym, and sports facilities. There is also a children's play area and a green zone for you to relax and unwind.

For those with a penchant for daring dreams and a desire to transform their homes into opulent canvases of self-expression, DSL Essencia is the ultimate choice.



DSL
Essencia
URBAN FARMS

Life's finer things, designed to suit your style.



Master Plan



- OVERVIEW**
- Project Area : 26.4 Acres
 - No. of Plots : 63
 - Plot Size Range : 931-1856 Sq.Yds.
 - Green Zone
 - 30 Feet Wide Internal Roads
 - 0.5 Acres of Clubhouse



URBAN FARMS

Life of Aesthetic Welcomes

Experience a truly magical welcome as the aesthetically pleasing entrance greets you with the aroma of mother nature. Creating that long-lasting impression, it makes you feel part of something bigger and unique.



Life of Elegance and Extravagance

Move in and out of the community in comfort and style with wide internal roads. With an abundance of space, the well-maintained and aesthetically designed internal roads make your journey in the community an unparalleled delight.



Life of Solitude and Socializing

Enjoy immersive outdoor spaces that are perfect for socialising or gatherings. Multiple aesthetically designed, bright and open seating spaces transform the community into a place of relaxation and outdoor enjoyment.



Life with a Touch of Nature's Freshness

Step into vast lush greens in front of your home. Take a relaxing walk, inhale fresh air and exhale all the stress, the beautiful landscape is designed to reward you with breathtaking panoramas and an exciting array of experiences.



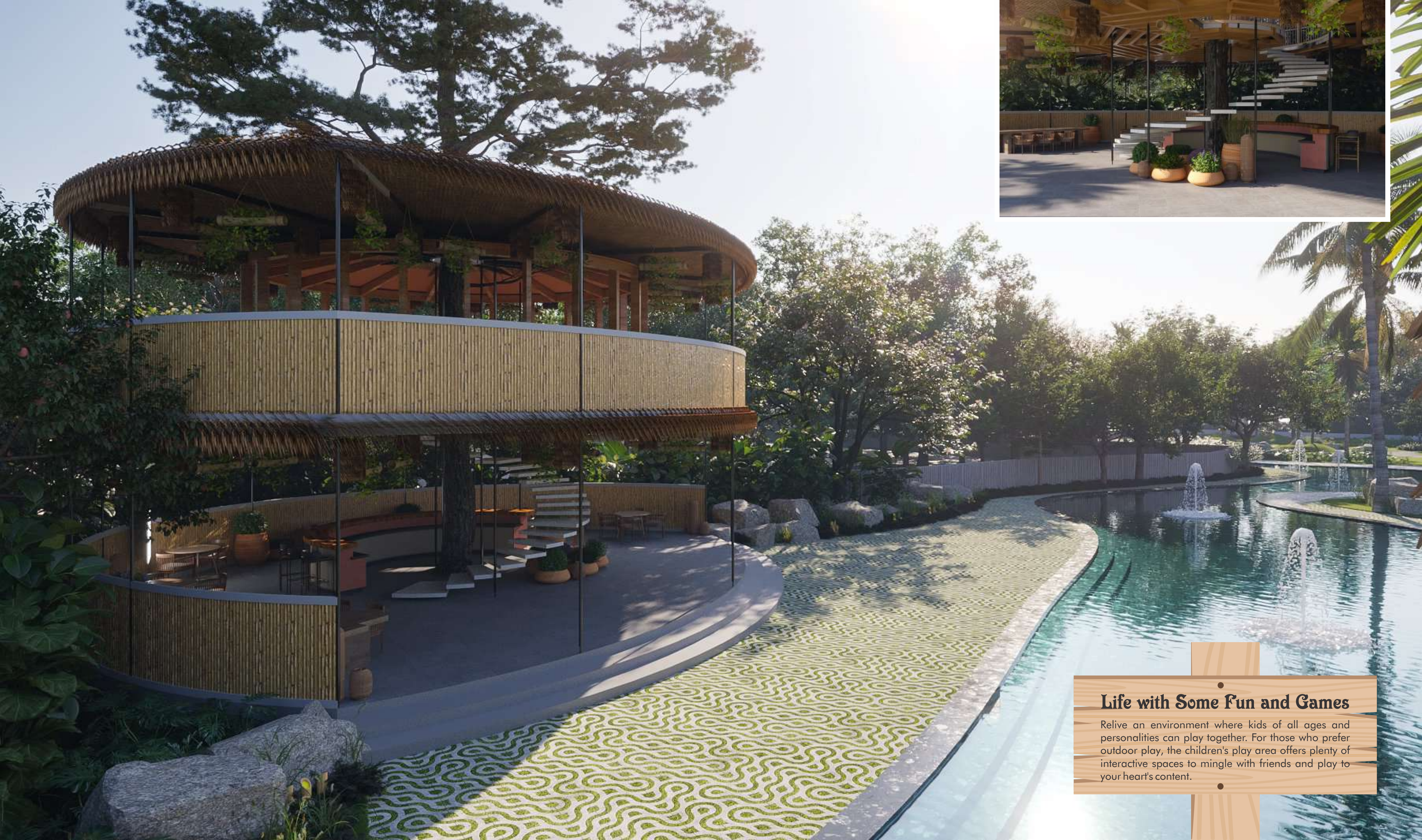
Life with a Sense of Serenity

Feel more calm and peaceful at home by spending time around the water body. With awe-inspiring experiences to boost the mood, the community has abundant aesthetic spaces to rejuvenate the body and mind.



Life of Stories and Experiences

Enjoy live shows and community gatherings under the sky in a beautiful, open-air setting. The amphitheatre is a breathtaking space in the community, perfect for gatherings, celebrations, performances or events of all sorts.



Life with Some Fun and Games

Relive an environment where kids of all ages and personalities can play together. For those who prefer outdoor play, the children's play area offers plenty of interactive spaces to mingle with friends and play to your heart's content.



East Facing View



West Facing View





Life of Luxurious Indulgence

Step into your home and be enveloped by vibrant luxury that feels like 'you'. Ushering in a sense of escapism, these elegant, stylish and contemporary homes offer a cozy retreat from the bustling lifestyle of the city.

Life of Cozy, Cuddly Spaces

Embrace living spaces that invite you to relax, unwind and indulge in absolute comfort. Turning your home into a sanctuary, the calming and restful bedroom spaces make for a more soothing and personalized experience.





Life of Flavorful Memories

Experience warm, inviting and comfortable spaces that inspire you to gather and celebrate. The kitchen is the perfect space for those who enjoy cooking and entertaining, while the dining space sets the tone for moments of celebration with the ones you love.

Clubhouse

Life with More Choices

Discover the ultimate in indulgence with an exclusive and contemporary clubhouse. With the feel of a private resort and encouraging rest, relaxation and getting back to nature, it is the perfect blend of nature and the finer things in life.



Multipurpose Hall

Life with Eclectic Experiences

Discover a unique venue to celebrate at home, allowing both complete intimacy and the buzz of being in the centre of the action. The multipurpose hall is designed to meet the needs of different families and different occasions.

Dining Area



Life with All the Ingredients of Happiness
Gather with friends, family and fellow community members and enjoy moments of celebration and togetherness over food. Creating an ambiance of opulence and sophistication, the dining area is perfect for a ritual of family or community.

Cafeteria



Life with a Variety of Flavours

Embark on a culinary adventure that's sophisticated and unique in the comfort of your home. The cafeteria in the community is a place to savor not just the food but also the boundless love and memories that accompany it.

Indoor Games



Life with Ultimate Entertainment

Kick-start your indoor entertainment with a range of board games at the clubhouse. The games room is thoughtfully designed to engage and entertain gamers who enjoy playing both active and passive indoor games.

Guest Room



Life of Enhanced Guest Experiences

Make your guests feel welcomed, relaxed and most of all pampered. The guest suites in the community create a really welcoming place for those visiting your home so they feel comfortable and at home and enjoy a memorable stay.

Location Map



Genome Valley



Kondapochamma Reservoir



St Paul International School



Outer Ring Road

Life of Comfort and Convenience
 Embrace a peaceful and serene life away from the hustle and bustle of the city. DSL Essencia, at Pamulaparthi, is in close proximity to the Outer Ring Road, which makes it easily accessible from all parts of the city. What's more, it gives a country feel within the city.

Preferred Marketing Partner



For more Details

 +91 92810 91870

www.propbuynsell.com